

GOODWAY®

SPECIALTY DRY STEAM TOOLS





9385-SMOOTH 33' Dry Steam Hose/Gun Assembly for GVC-18000 (Before 2019) with Easy-Clean Smooth Casing**\$1,895.00**
9385-SMOOTH-66 66' Dry Steam Hose/Gun Assembly for GVC-18000 (Before 2019) with Easy-Clean Smooth Casing**\$2,395.00**
9386-SMOOTH 33' Dry Steam Hose/Gun Assembly for GVC-18000 & GVC-36000 with Easy-Clean Smooth Casing**\$1,895.00**
9386-SMOOTH-66 66' Dry Steam Hose/Gun Assembly for GVC-18000 & GVC-36000 with Easy-Clean Smooth Casing**\$2,125.00**



93-KIT0225/XX Pipe Cleaning Tool – specify pipe OD when ordering.....**\$115-\$245**



93-KIT0933/DR 50" Extension for Overhead Pipe Attachments.....**\$420.00**



93-KIT0914/ARVE Short Fan Spray Wand.....**\$420.00**



93-KIT0915/ARVE 40" Fan Spray Wand.....**\$425.00**



93-KIT0916/ARVE 20" Fan Spray Wand.....**\$495.00**



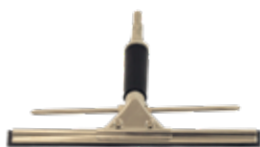
93-KIT0931 Flat Nozzle Short Wand.....**\$95.00**



93-KIT0915/AR35-90 40" Wand with 90 Degree Spray Nozzle.....**\$155.00**



93-KIT0916/AR35-90 20" Wand with 90 Degree Spray Nozzle.....**\$125.00**



93-KIT0930 Squeegee Tool Available in 10" or 20" **\$165.00**



93-KIT0930/FDA Squeegee Tool with FDA Approved Squeegee - 10" **\$325.00**



93-KIT0930-EXT 20" Extension Wand for KIT0930 Squeegee **\$145.00**



93-KIT0932/450 Multi-Brush Tool with 20" Wand..... **\$275.00**



93-KIT0932/950 Multi-Brush Tool with 40" wand **\$295.00**



93-KIT0934 Floor Spinner Tool with Vacuum Extraction Port. Available in 12" diameter. **\$2,495.00**



93-KIT0934-SQG Floor spinner with squeegee FDA Image attached. **\$2,495.00**



93-KIT0934/1 - 6.7" Handheld Spinner..... **\$1,950.00**



93-KIT0933 50" Extension for Floor Spinner, Lances, Steam Mops, Squeegee **\$395.00**



93-KIT0935/36 Drain Sanitation Tool 14" - Good for circular drains up to 14 inches **\$1,395.00**



93-KIT0936 20" Long Scraper Tool with 2 1/2" scraper for the GVC-18000 **\$265.00**
93-KIT0936-36 20" Long Scraper Tool with 2 1/2" scraper for the GVC-36000 **\$265.00**



93-KIT0936/90 38" Long Scraper tool with 3.5" Scraper for the GVC-18000 **\$305.00**
93-KIT0936/90-36 48" Long Scraper tool with 3.5" Scraper for the GVC-36000 **\$305.00**



93-KIT0937 Curved Scraper for Rollers - Requires Extension Wand **\$645.00**



93-KIT0939 Barrel Sanitation Tool with Temperature Readout **\$725.00**



93-KIT0942 Angled Extension Wand for Cleaning Under Machinery **\$395.00**



93-KIT0943 12" Flexible Steam Wand **\$195.00**



93-KIT0071/X Holster for Steam Wand/Gun **\$145.00**



93-KIT3000 Accessory Storage Bucket with Bracket **\$595.00**



93-MAP0489/XL Wide Hook for 66' Hose and Extension Cords **\$305.00**



93-KIT0715/QR 24" Steam Mop **\$285.00**



93-KITQ704 24" Microfiber Cloth for 93-KIT0715 **\$85.00**



93-KIT0714/QR 16" Steam Mop **\$245.00**



93-KITQ706 16" Microfiber Cloth for 93-KIT0714 **\$82.00**



93-STEAM-CANNON-450MM Dry Steam Cannon Attachment **\$975.00**



93-BRUSH-FDA-LG Large Color Coded Nylon Scrub – FDA Approved Bristles, Stainless Steel Staples. Colors Available: White, Yellow, Red, Green, Blue **\$14.00**



93-BRUSH-FDA-MD Medium Color Coded Nylon Scrub – FDA Approved Bristles, Stainless Steel Staples. Colors Available: White, Yellow, Red, Green, Blue **\$12.00**



93-BRUSH-FDA-SM Small Brush – Color Coded Nylon Scrub – FDA Approved Bristles, Stainless Steel Staples. Colors Available: White, Yellow, Red, Green, Blue **\$10.00**



9319-VAC-KIT | 9319-VAC-KIT-8 Dry Steam/vacuum kit including small vacuum, mounting bracket, steam/vacuum hose and full set of tools. Ideal for steam cleaning floors, walls and other flat areas while simultaneously vacuuming away soils and moisture..... **\$2,295.00**



9387 Dry Steam/Vacuum Hose 18 feet **\$1,095.00**



9387-60 Dry Steam/Vacuum Hose 60 feet (requires stronger vacuum - EV-60-T or AV-1200) **\$2,495.00**



93-ACC-FT200 Hand tool for cleaning flat, solid belts in place. Also used as a squeegee with swivel. Customizable width. **\$2,595.00**



93-KIT0808/AD Adapter connects 93-ACC-FT200 to 9387 steam hose..... **\$45.00**



93-KIT0805/M 12" Squeegee **\$85.00**



93-KIT0806/M 4" Clear Squeegee..... **\$68.00**



93-KIT0801 Extension Tube **\$60.00**



93-KIT0802 Short Extension Tube..... **\$50.00**



93-KIT0810 Angled Extension **\$45.00**



93-KIT0803 20" Floor Brush with 93-KIT0825 Squeegee.. **\$155.00**



93-KIT0804 12: Floor Brush with 93-KIT0823 Squeegee .. **\$135.00**

PUREBELT™ MODULAR SYSTEM - CONVEYOR BELT CLEANING SYSTEM FOR INTRALOX MESH AND METAL WIRE BELTS



PureBelt™ Modular System Is a robotic automated conveyor belt cleaning system. For mesh belts. Standard version is 45", wider versions available..... **Call for Price**



GVC-SH-25-10-ASSM 10' Steam Hose with 1/4" Inside Diameter
Connects Dry Steam Cleaner to Belt Cleaning System..... **\$1,445.00**

GVC-SH-25-20-ASSM 20' Steam Hose with 1/4" Inside Diameter
Connects Dry Steam Cleaner to Belt Cleaning System **\$2,245.00**

GVC-SH-25-30-ASSM 30' Steam Hose with 1/4" Inside Diameter
Connects Dry Steam Cleaner to Belt Cleaning System **\$3,145.00**

GVC-SH-38-10-ASSM 10' Steam Hose with 3/8" Inside Diameter
Connects Dry Steam Cleaner to Belt Cleaning System **\$1,495.00**

GVC-SH-38-20-ASSM 20' Steam Hose with 3/8" Inside Diameter
Connects Dry Steam Cleaner to Belt Cleaning System **\$2,295.00**

GVC-SH-38-30-ASSM 30' Steam Hose with 3/8" Inside Diameter
Connects Dry Steam Cleaner to Belt Cleaning System **\$3,195.00**



93-KIT5003/8 Adapter connects GVC to 93-ACC-SH **\$395.00**

93-KIT5003/8-NEW Adapter connects GVC to 93-ACC-SH,
large diameter **\$395.00**

PORTABLE BRUSHLESS/BRUSH SYSTEMS: CONVEYOR BELT CLEANING SYSTEM FOR FLAT, SOLID (WEB) BELTS



PureBelt™ Portable Brushless Belt Cleaning System for Flat Belt Systems with dry steam and vacuum. Completely portable

..... **Call for Price**

PureBelt™ Portable Brush System CIP System for Flat, Solid Belts with dry steam and vacuum. Completely portable and will fit a range of belt widths up to 10" with an additional motorized food grade brush

..... **Call for Price**



GVC-SH-25-10-ASSM 10' Steam Hose with 1/4" Inside Diameter
Connects Dry Steam Cleaner to Belt Cleaning System..... **\$1,445.00**

GVC-SH-25-20-ASSM 20' Steam Hose with 1/4" Inside Diameter
Connects Dry Steam Cleaner to Belt Cleaning System **\$2,245.00**

GVC-SH-25-30-ASSM 30' Steam Hose with 1/4" Inside Diameter
Connects Dry Steam Cleaner to Belt Cleaning System **\$3,145.00**

GVC-SH-38-10-ASSM 10' Steam Hose with 3/8" Inside Diameter
Connects Dry Steam Cleaner to Belt Cleaning System **\$1,495.00**

GVC-SH-38-20-ASSM 20' Steam Hose with 3/8" Inside Diameter
Connects Dry Steam Cleaner to Belt Cleaning System **\$2,295.00**

GVC-SH-38-30-ASSM 30' Steam Hose with 3/8" Inside Diameter
Connects Dry Steam Cleaner to Belt Cleaning System **\$3,195.00**



93-KIT5003/8 Adapter connects GVC to 93-ACC-SH ... **\$395.00**

93-KIT5003/8-NEW Adapter connects GVC to 93-ACC-SH,
large diameter **\$395.00**

FIXED BRUSH/BRUSHLESS SYSTEM: CONVEYOR BELT CLEANING SYSTEM FOR FLAT, SOLID (WEB) BELTS



PureBelt™ Fixed Brushless Belt Cleaning System Permanent clean-in place of flat belts. Contentiously clean even during production..... **Call for Price**



GVC-SH-25-10-ASSM 10' Steam Hose with 1/4" Inside Diameter Connects Dry Steam Cleaner to Belt Cleaning System..... **\$1,445.00**

GVC-SH-25-20-ASSM 20' Steam Hose with 1/4" Inside Diameter Connects Dry Steam Cleaner to Belt Cleaning System **\$2,245.00**

GVC-SH-25-30-ASSM 30' Steam Hose with 1/4" Inside Diameter Connects Dry Steam Cleaner to Belt Cleaning System **\$3,145.00**

GVC-SH-38-10-ASSM 10' Steam Hose with 3/8" Inside Diameter Connects Dry Steam Cleaner to Belt Cleaning System **\$1,495.00**

GVC-SH-38-20-ASSM 20' Steam Hose with 3/8" Inside Diameter Connects Dry Steam Cleaner to Belt Cleaning System **\$2,295.00**

GVC-SH-38-30-ASSM 30' Steam Hose with 3/8" Inside Diameter Connects Dry Steam Cleaner to Belt Cleaning System **\$3,195.00**



93-KIT5003/8 Adapter connects GVC to 93-ACC-SH ... **\$395.00**

93-KIT5003/8-NEW Adapter connects GVC to 93-ACC-SH, large diameter **\$395.00**



CUSTOM AUTOMATED CLEANING SOLUTIONS

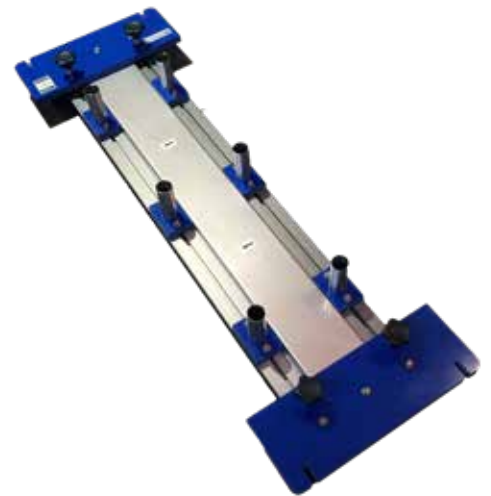


Chain Cleaner (Dry Steam and Vacuum) Custom steam/vacuum device to clean chain automatically..... **Call for Price**



Brushless System for Proofer (Dry Steam and Vacuum) Custom steam/vacuum device to clean vertical proofer belt automatically. **Call for Price**

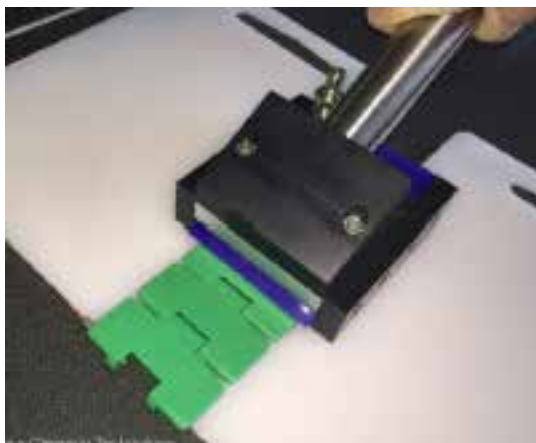
Vacuum Only - Belt Cleaning System for Flat, Solid (Web) Belts Custom vacuum only cleaning head for flat, solid belts..... **Call for Price**





Edge Cleaner (Dry Steam and Vacuum) Custom Dry Steam/Vacuum device to clean the edge of this conveyor continuously during production.
..... **Call for Price**

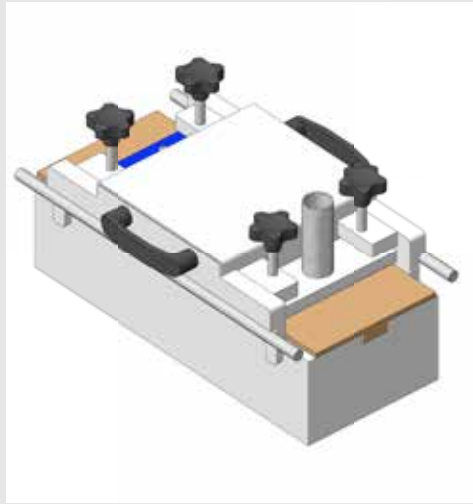
In Line Cleaner (Steam Only, for Microorganism Control) In Line Cleaner (Dry Steam Only, for Microorganism Control) **Call for Price**



Hand Tool for Modular Flat-Top Plastic Belting (Dry Steam and Vacuum) Hand tool for cleaning modular flat-top plastic belting in place with steam and vacuum extraction **Call for Price**

CONTINUED CUSTOM AUTOMATED CLEANING SOLUTIONS

Belt Cleaning System for Modular Flat-Top Plastic Belting (Dry Steam and Vacuum) Belt Cleaning system for cleaning modular flat-top belting in place with steam and vacuum extraction.**Call for Price**



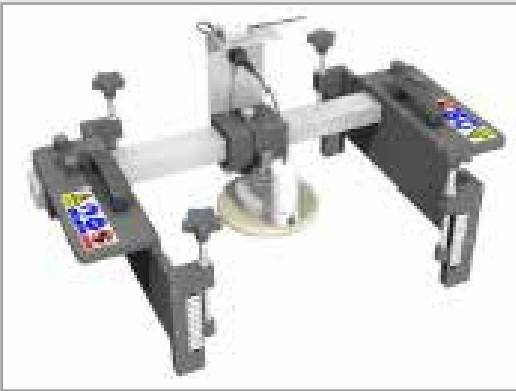
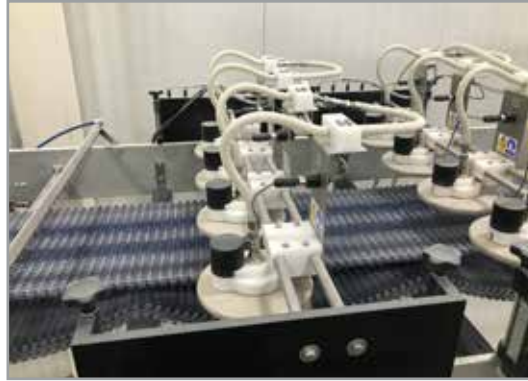
Handheld Belt Cleaning Tool for Flat, Solid Belts (Dry Steam and Vacuum) Handheld Belt Cleaner to clean Flat, Solid Belts in place with Steam and Vacuum – Built to Customizable Belt Width..... **Call for Price**

Peel Board Cleaner (Dry Steam and Vacuum)
Customizable Board Width **Call for Price**



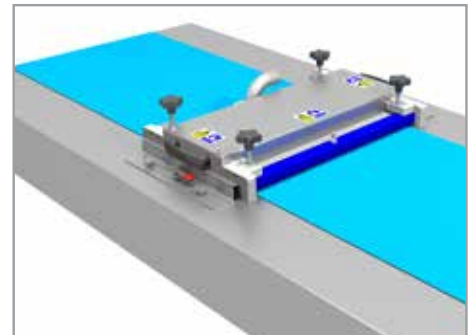
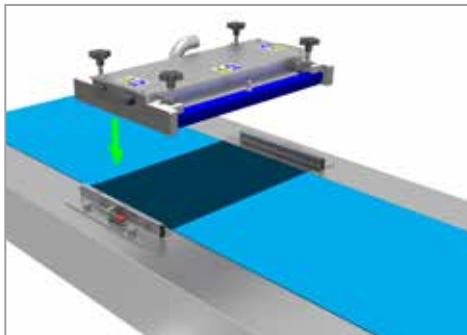
CONTINUED CUSTOM AUTOMATED CLEANING SOLUTIONS

Bun Pan Cleaning System Customizable Pan Width - Designed for Glaze / Egg Wash Removal **Call for Price**



Small Width Intralox Conveyor Belt Cleaner Small Belt Cleaner with Motorized Spinner Nozzles **Call for Price**

Portable Brushless System without Stiffener Plate Portable Brushless without the standard stiffener plate. For quicker setup & tight spaces. **Call for Price**



Storage Trolleys Custom Stainless Steel Storage Trolleys for Belt Cleaners with Storage Bins **Call for Price**