

# PORTABLY AND EFFECTIVELY REMOVE SCALE DEPOSITS



CE

GDS-C40

CE

GDS-C92



## RECOMMENDED CLEANER

ScaleBreak-5

Find on pages 46, 167

## GDS-C40 and GDS-C92 – Innovative Flow Reverser

If you are looking for smaller and portable descalers, your search ends here. GDS-C40, and its big brother, the GDS-C92, are constructed of heavy-duty polyethylene and acid-proof components. These units are strategically engineered for prolonged use in industrial applications.

The secret to their success at removing scale lies in the innovative flow reversal valve. No need to lose circulation time shutting down while disconnecting and making hose changes. The on-board tank allows for foam and CO2 to be released, eliminating potential pockets and speeding up the descaling process.

The GDS-C40 is perfect for brazed plate heat exchangers and with the flow reversal valve can even open plugged channels. The GDS-C92 steps up to mid-range equipment such as shell & tube heat exchangers or high efficiency package boilers.

GDS-C40	
Motor Power	1/2 HP
Input Power	Standard: 7.6 amps, 115V, 60 Hz AC Optional: 3.8 amps, 230V, 50 Hz
Power Supply Cord	18', 18-3
Output Water Flow	15 GPM
Pump	Centrifugal
Tank Capacity	10 gallons
Dimensions	27" high x 15" wide x 17" deep
Weight	37 lbs net dry

## FEATURES

- Acid proof pump and fittings
- Innovative flow reversal valve
- 15 or 21 GPM pump (depending on model)
- Compact design for easy transport and storage
- 10 or 15 gallon reservoir tank (depending on model)
- Venting cap for closed systems

## GDS-MSA Adapters - Perfect for Cleaning Applications with Grooved Victaulic Fittings

These adapters are designed for systems utilizing grooved piping and come in 1-1/2", 2", 2-1/2", 3" & 4" sizes. They are perfect for grooved connections on brazed plate heat exchangers and support our partnerships with Multistack, SWEP & WaterFurnace.



A set of two is required to attach to the top and bottom water supply. They are fitted with a 3/4" male fitting and easily attach to both our GDS-C40 & GDS-C92 pump systems. Simplify your next cleaning with these simple to use adapters.

- Quickly connect Goodway descaling systems to multistack, WaterFurnace and Trane brazed plate heat exchangers
- Available in a variety of sizes
- High quality construction

**GDS-MSA-200:** Adapter for the GDS systems ..... **Call for Price**

**GOODWAY®**  
INNOVATIVE MAINTENANCE SOLUTIONS

**Call: 1-800-333-7467**

**Visit: [www.goodway.com](http://www.goodway.com)**

Goodway Technologies Corporation

420 West Avenue, Stamford, CT 06902-6384 U.S.A.

Phone: 203-359-4708 • Fax: 203-359-9601 • [goodway@goodway.com](mailto:goodway@goodway.com)

## BEST RESULTS - USE WITH SCALEBREAK®



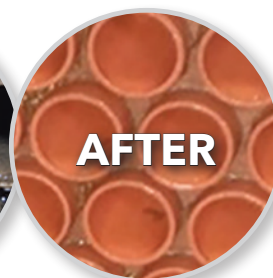
// .....

ScaleBreak did an amazing job on my chiller - I have never seen these tubes so clean and not one clog!  
**– Facility Manager**

..... //



**BEFORE**



**AFTER**

### GDS-C40 & GDS-C92 APPLICATIONS

- Boilers and hot water heaters
- Multistack units
- Steam generators
- Plate and tube heat exchangers
- Condensers and chillers
- Cooling coils and water-cooled rolls
- TCU coolers, mold tools, and extruder barrels found on injection molding machines

### BECOME A DESCALING EXPERT

SCALE: WHY YOU HAVE IT, WHAT IT DOES AND HOW TO DESCALE SAFELY AND EFFECTIVELY

To view the pre-recorded webinar visit the URL or scan the QR code:

Visit <https://www.goodway.com/goodway-scale-webinar>



#### GDS-C40:

Scale Removal System, including 10 gallon tank and two 10' circulation hoses ..... **Call for Price**

**GDS-C92:** Scale Removal System, including 15 gallon tank and two 10' circulation hoses ..... **Call for Price**

**Note:** Chemical goggles must be worn when using this machine.

**PH-PROBE-TESTER:** Hand held electronic PH tester ..... **Call for Price**



PH-PROBE-TESTER

#### GDS-C92

Motor Power	3/4 HP
Input Power	Standard: 8.6 amps, 115V, 60 Hz AC Optional: 4.3 amps, 230V, 50 Hz
Power Supply Cord	18', 18-3
Output Water Flow	21 GPM
Pump	Centrifugal
Tank Capacity	15 gallons
Dimensions	35" high x 15" wide x 23" deep
Weight	50 lbs net dry

**GOODWAY®**  
 INNOVATIVE MAINTENANCE SOLUTIONS

**Call: 1-800-333-7467**

**Visit: [www.goodway.com](http://www.goodway.com)**

Goodway Technologies Corporation

420 West Avenue, Stamford, CT 06902-6384 U.S.A.

Phone: 203-359-4708 • Fax: 203-359-9601 • [goodway@goodway.com](mailto:goodway@goodway.com)