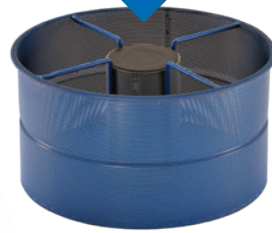


SAVE TIME WITH THIS EFFICIENT CHIP SEPARATOR



**CUSTOMER
FAVORITE**

**7 GALLON
CAPACITY BASKET
SEPARATES SOLIDS**



FEATURES

- Two heavy-duty motors or Air-powered
- Coolant level indicator
- Liquid shut-off
- 1" Dump Valve
- Tangential intake port
- Metal chip basket
- Reusable filter
- 1 1/2" or 2" hoses

DV-2-MET – Versatile and Economical

For first-rate performance while separating chips from coolant, the DV-2-MET ChipMaster® is the machine you can depend on. Not only does it collect and separate chips down to 0.05", but it also recovers clumps due to a specially designed tangential intake port.

The ChipMaster's large, 7 gallon capacity basket will hold solids, while fluids easily drain into the tank. Choose between electricity or compressed air power to suit your needs.

DV-2-MET	
Motor Power	Twin motors – 2.7 HP (total)
Input Power	15 amps, 115V, 50/60 Hz AC
Power Supply Cord	30', 14-3
Air Requirements	N/A
Air Line	N/A
Static Water Lift	90"
Air Displacement	224 CFM
Filtration	0.05" metal chip basket
Tank	27 gallons bonderized steel
Dry Capacity	7 gallons
Wet Capacity	15 gallons
Noise Level	76 dBA
Dimensions	20 1/2" diameter tank x 44" high
Weight	150 lbs

ELECTRIC POWERED UNIT:

DV-2-MET: Chip/Coolant Recovery Vacuum, including filter, tangential intake port, 7 gallon metal chip basket, 27 gallon bonderized steel drum, handles, casters and dump valve

Call for Price

Note: Vacuums do not include accessories. Order VAC-KIT-5, VAC-KIT-5-G or individual accessories shown on pages 153-160.

VACUUM ACCESSORY KITS



VAC-KIT-5

VAC-KIT-5: 2" Bulk Pickup Vacuum Accessory Kit: 15' Smooth Bore PVC Hose, 56" Double Bend Wand, 18" Bulk Pickup Nozzle and 13" Aluminum Gulper Tool.....

Call for Price

VAC-KIT-5-G: 2" Grounded Bulk Pickup Vacuum Accessory Kit: Same as VAC-KIT-5 except with grounding wire... **Call for Price**

Visit www.goodway.com to see more!

GOODWAY®
INNOVATIVE MAINTENANCE SOLUTIONS

Call: 1-800-333-7467

Visit: www.goodway.com

Goodway Technologies Corporation

420 West Avenue, Stamford, CT 06902-6384 U.S.A.

Phone: 203-359-4708 • Fax: 203-359-9601 • goodway@goodway.com